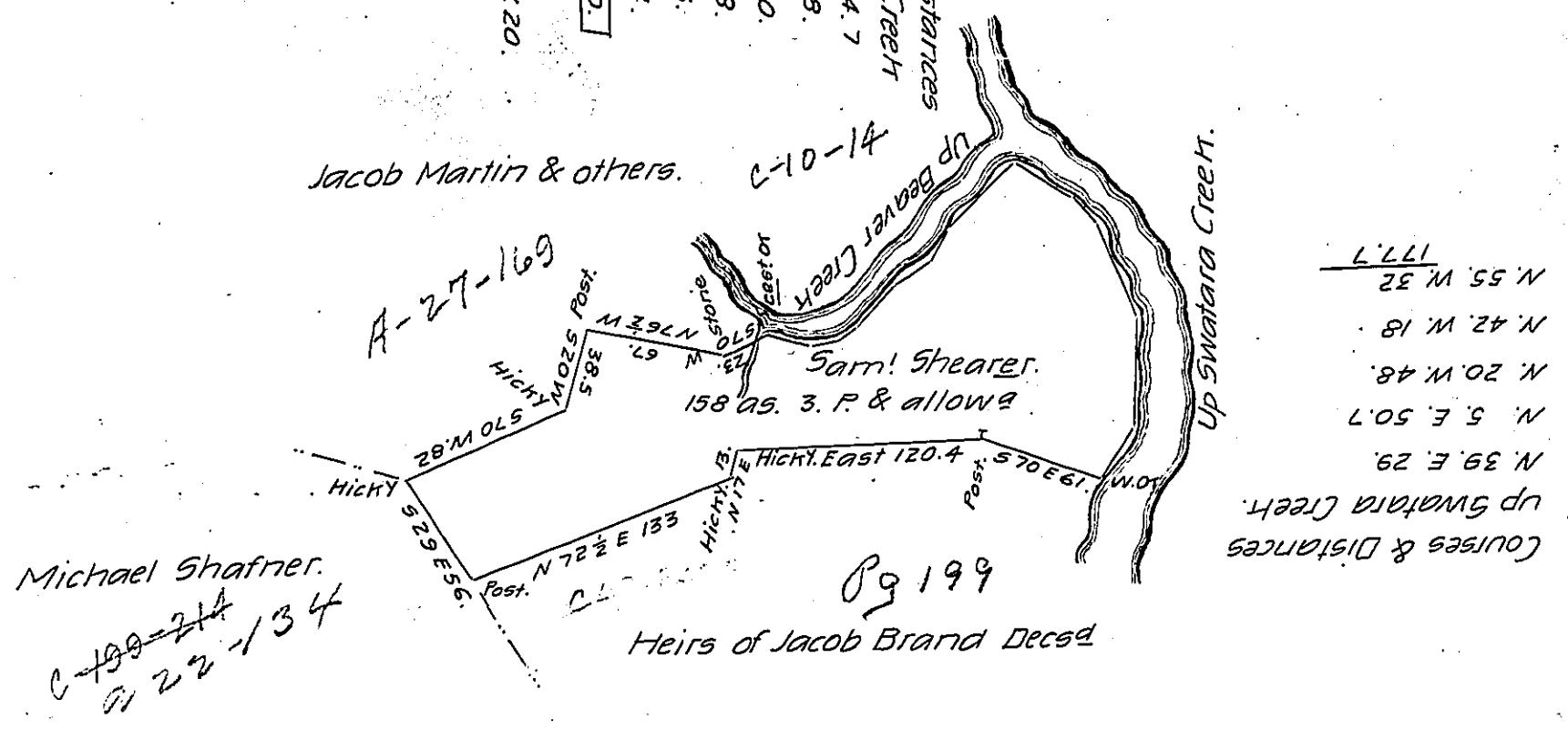


FORM No. 1.

- \* 5.75 W. 20.
- \* 5.83 1/2 W. 14.
- 5.63 W. 13.
- 5.47 W. 28.
- 5.59 W. 20.
- 5.36 W. 18.
- 5.48 1/2 W. 44.7
- UP Beaver Creek
- Courses & Distances



Surveyed for Samuel Shearer on the 21st of March 1812 the above described Tract of Land containing one hundred and fifty eight acres three perches and the allowance of six P.Ct. Situate in Swatara Township Dauphin County By Virtue of a Warrant granted to Francis Robert & Ann Pattison dated the 14th of March 1747/8

John Mc Kee D.S.

Andrew Porter Esqr.  
Surveyor General.

IN TESTIMONY that the above is a copy of the original remaining on file in the Department of Internal Affairs of Pennsylvania, made conformably to an Act of Assembly approved the 16th day of February, 1833, I have hereunto set my Hand and caused the Seal of said Department to be affixed at Harrisburg, this sixth day of July 1906

*Harold Brown*  
Secretary of Internal Affairs.